

YOU PROBABLY  
DON'T SEE IT, BUT  
YOU DEFINITELY  
HEAR IT

**Ecophon**  
SAINT-GOBAIN

fade®



# Contents

- 04 ABOUT ECOPHON**
- 06 GOOD ACOUSTICS MATTER EVERYWHERE**
- 08 OUR ACOUSTIC PLASTER**
- 10 ARCHITECT YOUR SPACE**
- 12 COLOURS WITH BEAUTY BENEFITS**
- 14 INSTALLATION GUIDANCE**
- 16 TYPES OF INSTALLATIONS**
- 18 REFERENCES**
- 34 COLOURS AND SURFACES**
- 36 SYSTEM PROPERTIES**

This publication shows products from Ecophon product range and those of other suppliers. The specifications are intended to provide a general guide to which products are most suitable for the preferences indicated. Technical data is based on results obtained under typical testing conditions or long experience in normal conditions. The specified functions and properties for products and systems are only valid on condition that instructions, installation diagrams, installation guides, maintenance instructions and other stated conditions and recommendations have been taken into consideration and followed. Deviation from this, such as changing specific components or products, will mean that Ecophon cannot be held responsible for the function, consequences and properties of the products. All descriptions, illustrations and dimensions contained in this brochure represent general information and shall not form part of any contract. Ecophon reserves the right to change products without prior notice. We disclaim any liability for misprints. For the latest information go to [www.ecophon.in](http://www.ecophon.in) or contact your nearest Ecophon representative.



Jätkäsaari School, Finland | Education



Keskuspuiston Ammattiopisto School, Finland | Education



# A sound effect

05

## **ON PEOPLE**

Saint-Gobain Ecophon contributes to good indoor environments for working, healing and learning. We do this by developing, manufacturing and delivering acoustic products and systems designed around the natural evolution of human hearing – replicating the outdoor sound experience indoors, because that’s just better for people.

Having a sound effect on people, in every way we can, is what we do proudly. That promise makes every one of us a passionate advocate for the importance of room acoustics to people’s wellbeing – whatever the space, activity or need.

# Good acoustics

## **MATTER EVERYWHERE**

The importance of acoustics is underappreciated. Sound impacts us in daily life, and the scientific support for improving our indoor sound environments is well-documented.

And what exactly is an ideal indoor sound environment for people?

One based on how we experience sound outside. The human auditory sense is naturally adapted to an outdoor environment where there is not any sound reflections from ceilings and walls.

That's why most of what we do at Ecophon is about replicating the acoustic qualities found in nature for indoor environments. We want to optimise indoor spaces to our natural way of hearing, so that speech and sound is easy to hear and understand, when needed, improving performance and wellbeing.





The Silo, Denmark | Residential

# Our acoustic

## PLASTER

The fade® Acoustic Plaster is a high-quality plastering system that absorbs unwanted noise in a wide range of environments. As an acoustic plaster solution spray applied to walls and ceilings, its highly absorbent qualities allow for optimum acoustic control in large, commercial spaces.

The fade® Acoustic Plaster System can be applied on virtually any surface including straight and curved walls, dramatic angles and arching domes offering a more flexible, discreet alternative to traditional acoustic solutions, such as suspended ceilings.

Bringing together high-value aesthetics and acoustic performance, the fade® Acoustic Plaster System is well-suited to a wide-range of developments, from historic buildings to high-end residential, commercial, retail and educational spaces.

By absorbing sound waves, the fade® sound-absorbing plaster system reduces reverberation time, providing the highest level of sound-absorption. In addition, the installation process is quick and easy to install and it does not contain any synthetic materials.







Hankook Tire, Korea | Commercial

Ar

# chitect

## YOUR SPACE

The possibilities with the fade® Acoustic Plaster is endless.

The flexible fade® Acoustic Plaster System is a discreet alternative to traditional acoustic solutions, such as suspended ceilings.

As an acoustic plaster solution spray applied to walls and ceilings, its highly absorbent qualities allow for optimum acoustic control in various spaces.

The fade® Acoustic Plaster System can be applied on virtually any surface including straight and curved walls, dramatic angles and arching domes.



# Colour

## BEAUTY WITH BENEFITS

It's available in 6 standard colours or customized colours to meet your design intent.  
Explore- the rest of our standard colors on page 35.

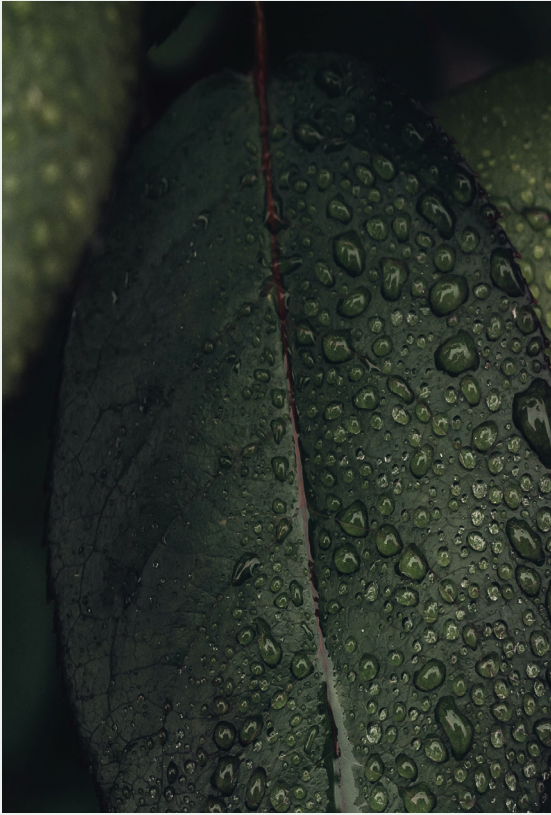


NCS S 2005-Y50R



Perfect Beige

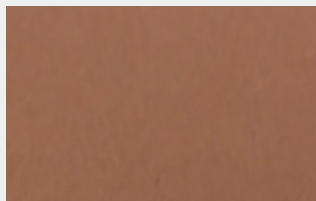
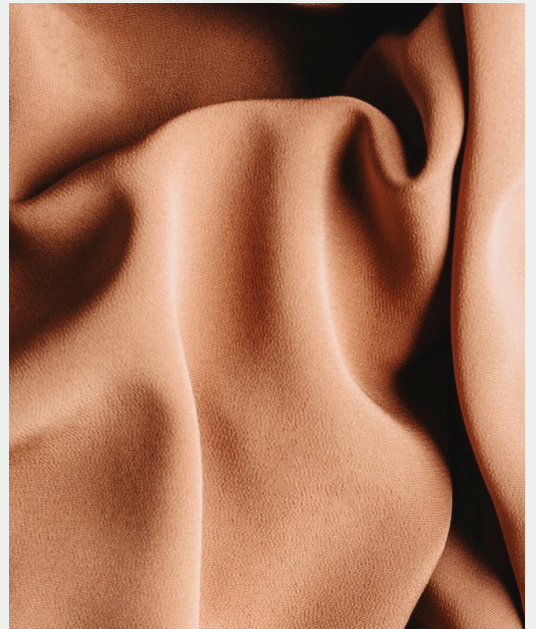
Go Green



NCS S 6010-G50Y

"Our bespoke colours ensure that every project is unique."

Clay



NCS S 4020-Y50R

# Installation

## GUIDANCE

The fade® Acoustic Plaster System is installed with just a few easy steps.



### 1A Mechanical Installation

The acoustic boards are installed to a suitable substrate with tight joints. Installation can be done mechanically with screws and fade® Special Washers 400mm (16") c/c.



### 1B Adhesive Installation

The acoustic boards are installed to a suitable substrate with tight joints. Installation can be done with the fade® Special adhesive.



### 2 fade® Special Joint Tape

fade® Special Joint Tape is applied onto all joints to reinforce the structure.



### 3 Filling

Acoustic plaster is applied onto the fade® Special Joint Tape and washers to level the surface.\*

\*Acoustic plaster on joints, and washers can be given a light sand when dry to remove any irregularities





**4**  
**Spraying - 1. layer**

The first layer of acoustic plaster is spray applied to a 1.5-2mm thickness (1/13") and troweled to a smooth finish.



**5**  
**Spraying - 2. layer**

The second and finishing layer of acoustic plaster is spray applied and troweled to a smooth finish. The two layers of acoustic plaster should build 3mm (1/8") in total.



**6**  
**Troweling**

Trowel both layers of acoustic plaster to a smooth finish.



**7**  
**Sanding**

For a completely smooth finish sand the entire surface until satisfied.



The Silo, Denmark | Residential

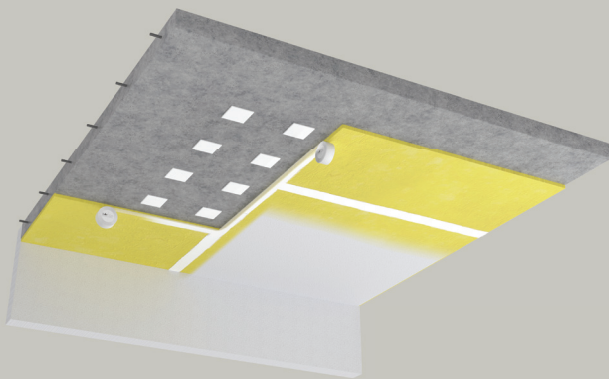
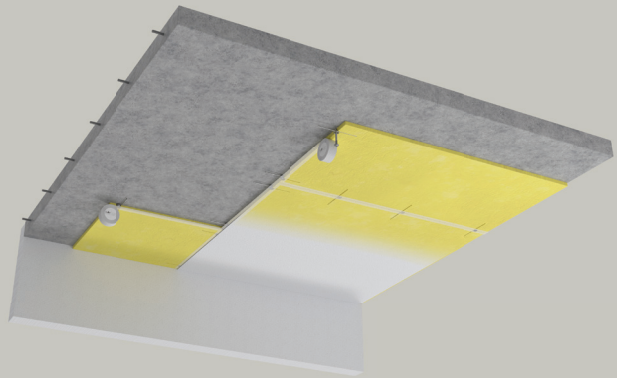


# TYPES OF INSTALLATION

The fade® Acoustic Plaster System is very flexible and can be installed in different ways.

## DIRECT INSTALLATION MECHANICALLY (M549)

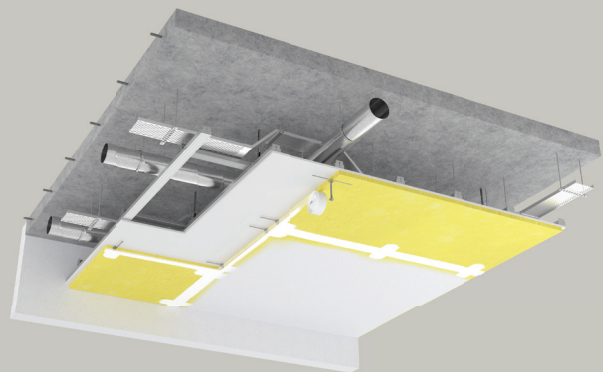
The acoustic board is installed directly onto a plasterboard, concrete or timber substrate with either approved adhesive or mechanically fixed with fade® Special Washers.



## DIRECT INSTALLATION ADHESIVE (M556)

## DIRECT - TO - GRID

The acoustic board is installed directly to a MF metal drywall grid system 400mm (16") c/c or similar with the fade® Special Washers.



### Suitable substrates:

Regular gypsum wallboard, MF metal drywall grid system 400mm (16") c/c or similar, concrete, previously painted substrates, timber/steel frame

# References

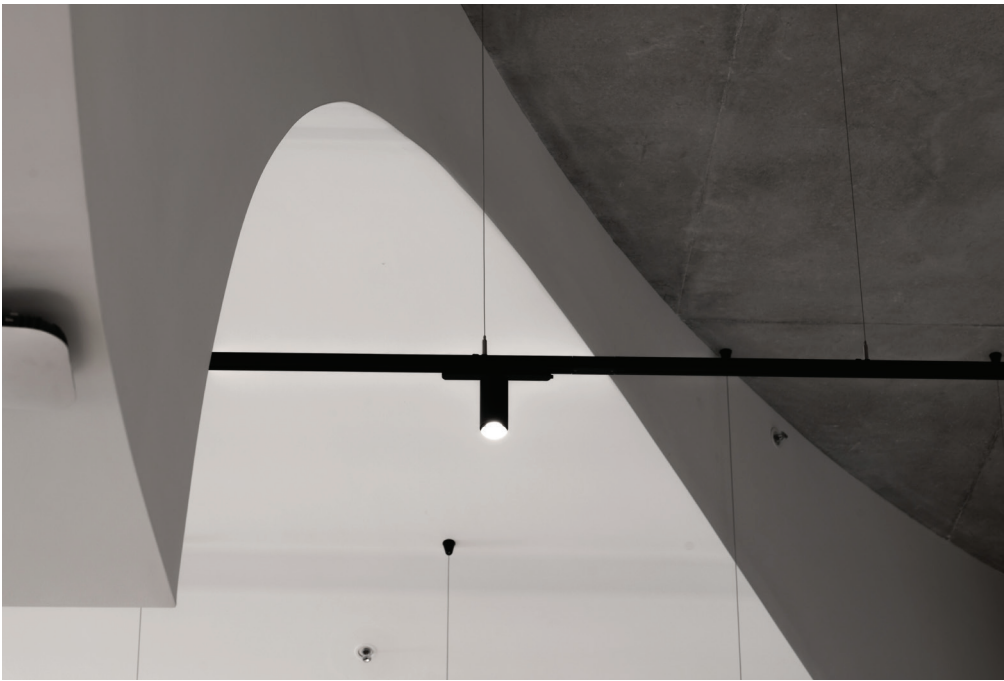
18



VillAnn, Sweden | Residential

S





Victorian Pride Centre, Australia | Leisure









Museum of the Future, UAE | Leisure



Le Jules Vernes, The Eiffel Tower, France | Hospitality











Orsted, Denmark | Commercial



The Louvre Museum, France | Leisure







Niittykumpu Metro Station, Finland | Transport



The Silo, Denmark | Residential





**NOTE**

Colours may vary slightly between different production batches.

Reproduction of colours vary between print and reality.



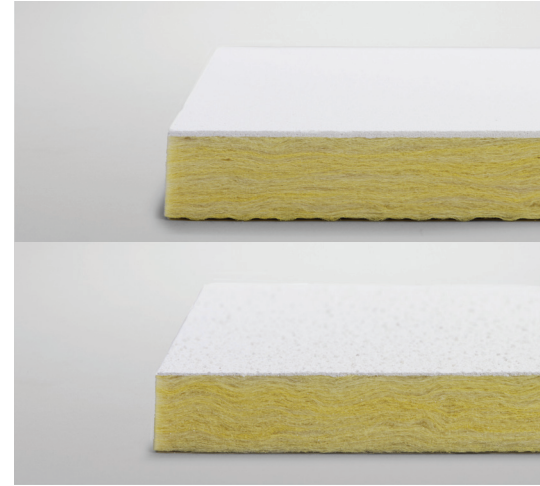
# COLOURS AND EFFECTS

## FADE BACIS

Plus+  
S 0300-N



Albus  
S 0500-N



## FADE STANDARD COLOURS

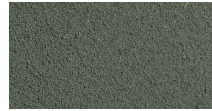
Clay  
NCS S 4020-Y50R



Brown Shade  
NCS S 5010-Y70R



Go green  
NCS S 6010-G50Y



Perfect Beige  
NCS S 2005-Y50R



Sandstone  
NCS S 3005-Y20R



Grey Sky  
NCS S 5005-Y50R



35

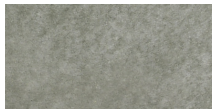


## FADE EFFECTS

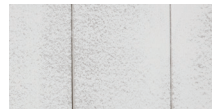
Rust  
base layer bespoke no 2228  
top layer bespoke no 2161



Concrete  
base layer bespoke no 2150  
top layer bespoke no 2139



Wood  
base layer bespoke no 2591  
top layer bespoke no 1413





# System Properties

## **ACOUSTICS, TECHNICAL PROPERTIES AND INSTALLATION DIAGRAMS**

- 30 Product Name
- 32 Product Name
- 36 Product Name
- 38 Product Name



Ecophon is the leading supplier of indoor acoustic solutions that improve working performance and quality of life. We believe in the difference sound can make to our everyday lives, and are passionate advocates for the importance of room acoustics to people's wellbeing – whatever the space, activity or need.

Having a sound effect on people is the principle that guides all we do. We're proud of the Swedish heritage and human approach that promise is founded on. Our uncompromising commitment to transparent sustainable practice. And, as members of the Saint-Gobain Group, to be doing our part in making the world a better home.

